

Aluminum W-type Waterproof Carports



Product Overview

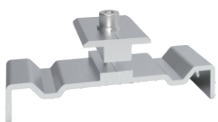
- > The W-type waterproof carport can be used on the ground, unlike traditional carports. It can protect the carport from the sun and rain while also increasing the power generation revenue.
- > The system utilizes a patented modular design that stabilizes the carport support structure and solar modules, providing a strong connection support.
- > Pre-assembled kits save on-site installation time and cost. Easy and flexible installation, equipped with high strength materials.
- > Cost utility components are less and construction is easy.

Aluminum W-type Waterproof Carports TY-CP-02

Tilt Angle	5-15°	Height	2200mm
Max Wind Load	40m/s	Material	AL-6005-T5&SUS304
Max Snow Load	1.0KN/m ²	Color	Silver/Black
Panel Size	1722*1134mm	Warranty	10 years
Layout	vertical		

Design Standards BS EN1991. ASCE7-10, BS 6399. AS NZS 1170. GBS0009-2012. MS 1553

Mid clamp



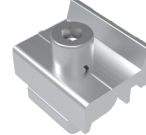
End clamp



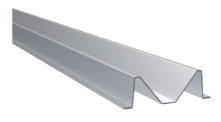
M-typesink clamp



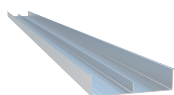
Rail clamps



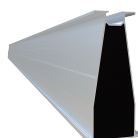
M-type sink



Second sink



Rail



Accessory set of main beam



Square tube column



Accessory set of base

